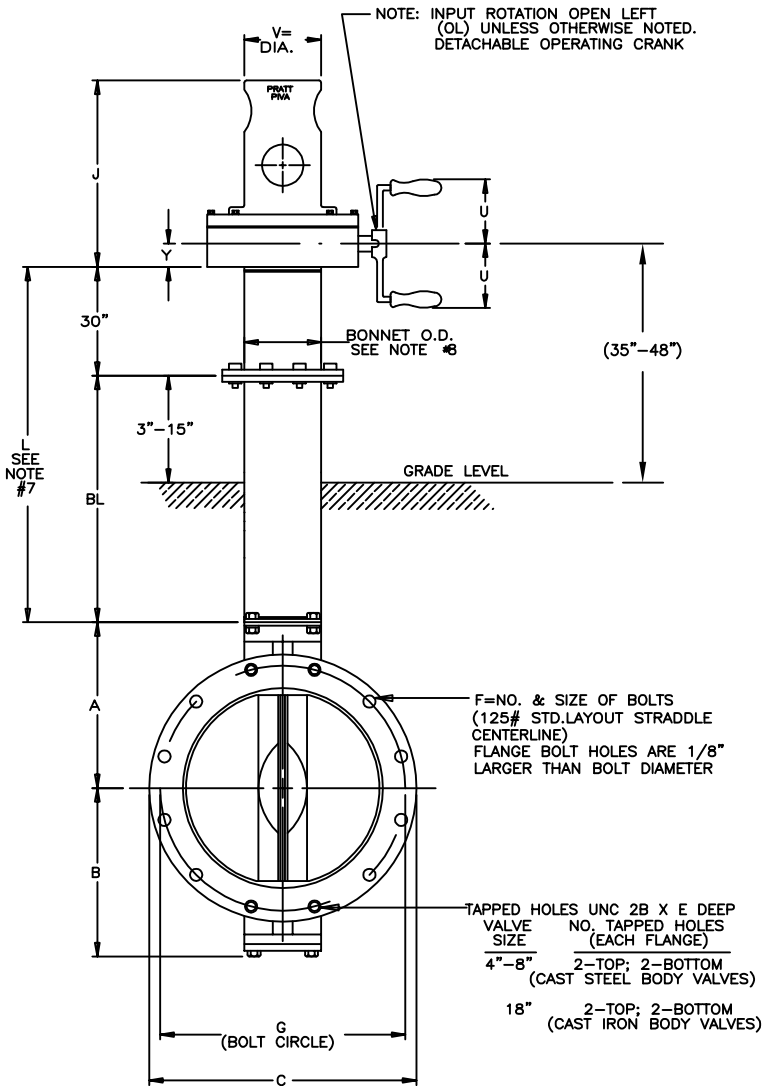
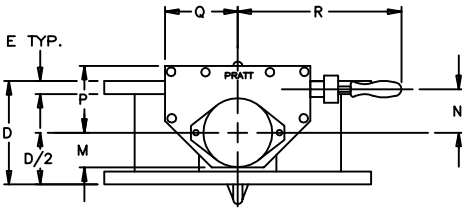


VALVE SIZE	A	B	C	D*	E	F	G
4	5-7/8	3-1/2	9	5	15/16	8--5/8	7-1/2
6	6-7/8	5-1/8	11	5	1	8--3/4	9-1/2
8	8-1/8	6-1/2	13-1/2	6	1-1/8	8--3/4	11-3/4
10	9-3/8	9-7/8	16	8	1-5/16	12--7/8	14-1/4
12	11	11-3/8	19	8	1-1/4	12--7/8	17
14	12-3/8	12-5/8	21	8	1-3/8	12--1	18-3/4
16	14	14-1/2	23-1/2	8	1-7/16	16--1	21-1/4
18	14-7/8	15-3/8	25	8	1-9/16	16--1-1/8	22-3/4

ACTUATOR SIZE	J	M	N	P	Q	R	U	V	Y	NUMBER OF TURNS
MDT-2S	12	2-1/8	2	4-1/2	4-1/8	11	8-5/8	4-1/2	2	32
MDT-3S	12-7/8	3-1/4	3-5/32	5-5/8	5-7/16	12-1/2	8-5/8	4-1/2	2-7/16	30
MDT-4S	13-1/2	3-3/8	4	7-5/16	6-3/4	18-11/16	12-9/16	4-1/2	2-7/8	40



NOTES:

- ALL DIMENSIONS SHOWN IN INCHES. "D" DIMENSION ± 1/16" FOR 4" THRU 10" VALVES. "D" DIMENSION ± 1/8" FOR 12" THRU 18" VALVES.
 - DIMENSIONS AND DRILLING OF END FLANGES CONFORM TO THE AMERICAN CAST IRON FLANGE STANDARDS, CLASS 125 (B16.1).
 - (RECOMMENDATIONS FOR MATING FLANGES) WHERE INSULATING BUSHINGS ARE USED, IT IS NECESSARY THAT BOLT HOLES BE DRILLED OVERSIZE BY AN AMOUNT EQUAL TO TWO TIMES THE INSULATING SLEEVE THICKNESS TO MAINTAIN THE SAME MINIMUM CLEARANCE FOR BOLTS.
 - VALVES MANUFACTURED AND TESTED IN ACCORDANCE WITH AWWA SPECIFICATIONS C-504, CLASS 150B.
 - ACTUATOR MOUNTED IN POSITION AS SHOWN.
 - VALVE ASSEMBLIES ARE UNDERWRITERS LABORATORIES (UL) LISTED AND FACTORY MUTUAL (FM) APPROVED FOR USE IN FIRE PROTECTION SYSTEMS.
 - BONNET LENGTHS ARE AVAILABLE IN 12" INCREMENTS. 54" TO 126" LENGTHS. (SPECIAL LENGTHS ARE NEGOTIABLE.)
 - OUTER TUBE O.D. IS 4-1/2" ON VALVE SIZES 8" AND SMALLER, 5-9/16" ON VALVE SIZES 10" THRU 14", 6-5/8" ON VALVE SIZES 16" AND 18".
 - THE FOLLOWING VALVE SIZES ARE FURNISHED WITH THE FOLLOWING ACTUATOR SIZES:

VALVE SIZE	ACTUATOR SIZE
4" THRU 8"	MDT-2S
10" AND 14"	MDT-3S
16" THRU 18"	MDT-4S
- PAINT: UPPER BONNET AND ACTUATOR: FIRE SAFETY RED
LOWER BONNET AND VALVE: AMERCOAT 370 OXIDE RED

REV	DATE	BY	DESCRIPTION	APP.
4	7/10/15	RCB	VALVE/MDT SIZES	
3	2/20/13	JTC	GRD.LEVEL/SFT MDT	CEM
2	7/25/11	JTC	UPDATED PAINT	RCB
1	12/7/09	MZ	REVISED VALVE SIZES	CEM

PRATT[®] HENRY PRATT COMPANY
AURORA, ILL.

GENERAL ARRANGEMENT DRAWING
PIVA FM-5 BUTTERFLY VALVES
FLANGE ENDS MDT ACTUATOR
DETACHABLE HANDCRANK

SCALE NONE DATE 11/22/05
DRAWN BY SB CHECKED BY JR
APPROVED GA=BORDER
DRWG. NO. GA-11507 REV 4 A/C