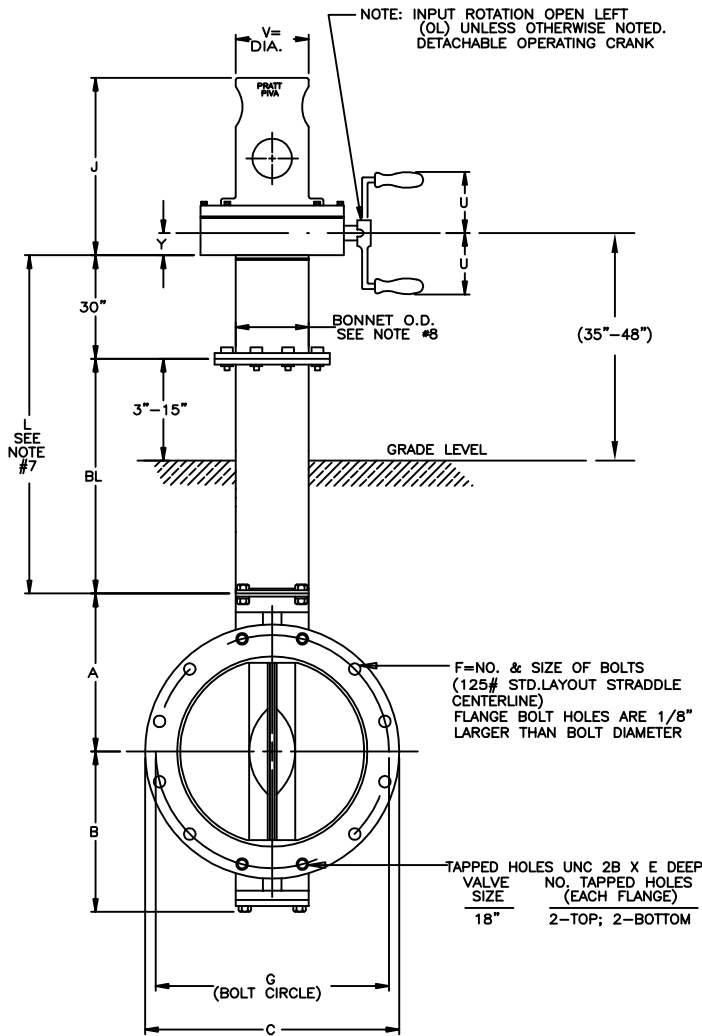
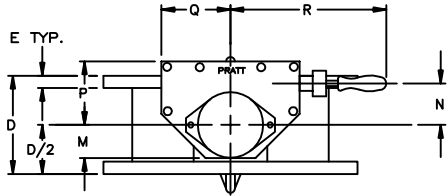


VALVE SIZE	ACTUATOR SIZE	A	B	C	D (SEE NOTE 1)	E	F	G	J	M	N	P	Q	R	U	V	Y	NUMBER OF TURNS
4	MDT-2S	5-7/8	4-1/2	9	5	1	8--5/8	7-1/2	12	2-1/8	2	4-1/2	4-1/2	13-5/16	8-5/8	4-1/2	2	32
6	MDT-2S	6-7/8	5-1/2	11	5	1-1/16	8--3/4	9-1/2	12	2-1/8	2	4-1/2	4-1/2	13-5/16	8-5/8	4-1/2	2	32
8	MDT-2S	8-1/8	6-3/4	13-1/2	6	1-3/16	8--3/4	11-3/4	12	2-1/8	2	4-1/2	4-1/2	13-5/16	8-5/8	4-1/2	2	32
10	MDT-3S	9-3/8	9-7/8	16	8	1-1/8	12--7/8	14-1/4	12-7/8	3-1/4	3-5/32	5-5/8	5-3/8	15-7/16	8-5/8	4-1/2	2-7/16	30
12	MDT-3S	11	11-3/8	19	8	1-5/16	12--7/8	17	12-7/8	3-1/4	3-5/32	5-5/8	5-3/8	15-7/16	8-5/8	4-1/2	2-7/16	30
14	MDT-3S	12-3/8	12-5/8	21	8	1-7/16	12--1	18-3/4	12-7/8	3-1/4	3-5/32	5-5/8	5-3/8	15-7/16	8-5/8	4-1/2	2-7/16	30
16	MDT-4S	14	14-1/2	23-1/2	8	1-1/2	16--1	21-1/4	13-1/2	3-3/8	4	7-5/16	6-3/4	18-3/4	12-9/16	4-1/2	2-27/32	40
18	MDT-4S	14-7/8	15-1/4	25	8	1-5/8	16--1-1/8	22-3/4	13-1/2	3-3/8	4	7-5/16	6-3/4	18-3/4	12-9/16	4-1/2	2-27/32	40



NOTES:

- ALL DIMENSIONS SHOWN IN INCHES. "D" DIMENSION $\pm 1/16"$ FOR 4" THRU 10" VALVES. "D" DIMENSION $\pm 1/8"$ FOR 12" THRU 18" VALVES.
- DIMENSIONS AND DRILLING OF END FLANGES CONFORM TO THE AMERICAN CAST IRON FLANGE STANDARDS, CLASS 125 (B16.1).
- (RECOMMENDATIONS FOR MATING FLANGES) WHERE INSULATING BUSHINGS ARE USED, IT IS NECESSARY THAT BOLT HOLES BE DRILLED OVERSIZE BY AN AMOUNT EQUAL TO TWO TIMES THE INSULATING SLEEVE THICKNESS TO MAINTAIN THE SAME MINIMUM CLEARANCE FOR BOLTS.
- VALVES MANUFACTURED AND TESTED IN ACCORDANCE WITH AWWA SPECIFICATIONS C-504.
- ACTUATOR MOUNTED IN POSITION AS SHOWN.
- VALVE ASSEMBLIES ARE UNDERWRITERS LABORATORIES (UL) LISTED AND APPROVED FOR USE IN FIRE PROTECTION SYSTEMS.
- BONNET LENGTHS ARE AVAILABLE IN 12" INCREMENTS. 54" TO 126" LENGTHS. (SPECIAL LENGTHS ARE NEGOTIABLE.)
- OUTER TUBE O.D. IS 4-1/2" ON VALVE SIZES 8" AND SMALLER, 5-9/16" ON VALVE SIZES 10" THRU 14", 6-5/8" ON VALVE SIZES 16" AND 18", 8-5/8".

PAINT: UPPER BONNET AND ACTUATOR: FIRE SAFETY RED
LOWER BONNET AND VALVE: AMERCOAT 370 OXIDE RED

REV	DATE	BY	DESCRIPTION	APP.
02	12/17/15	JUR	G,J DIM. CORRECTION	
01	8/25/15	JUR	DIM. CORRECTION	RCB

PRATT HENRY PRATT COMPANY
AURORA, ILL.

GENERAL ARRANGEMENT DRAWING
PIVA FM-5 250#UL BUTTERFLY VALVES
FLANGE ENDS MDT ACTUATOR
DETACHABLE HANDCRANK

SCALE NONE DATE 3/3/15

DRAWN BY JUR CHECKED BY PPS

APPROVED GA=BORDER

DRWG. NO. GA-11917 REV 2 A/C