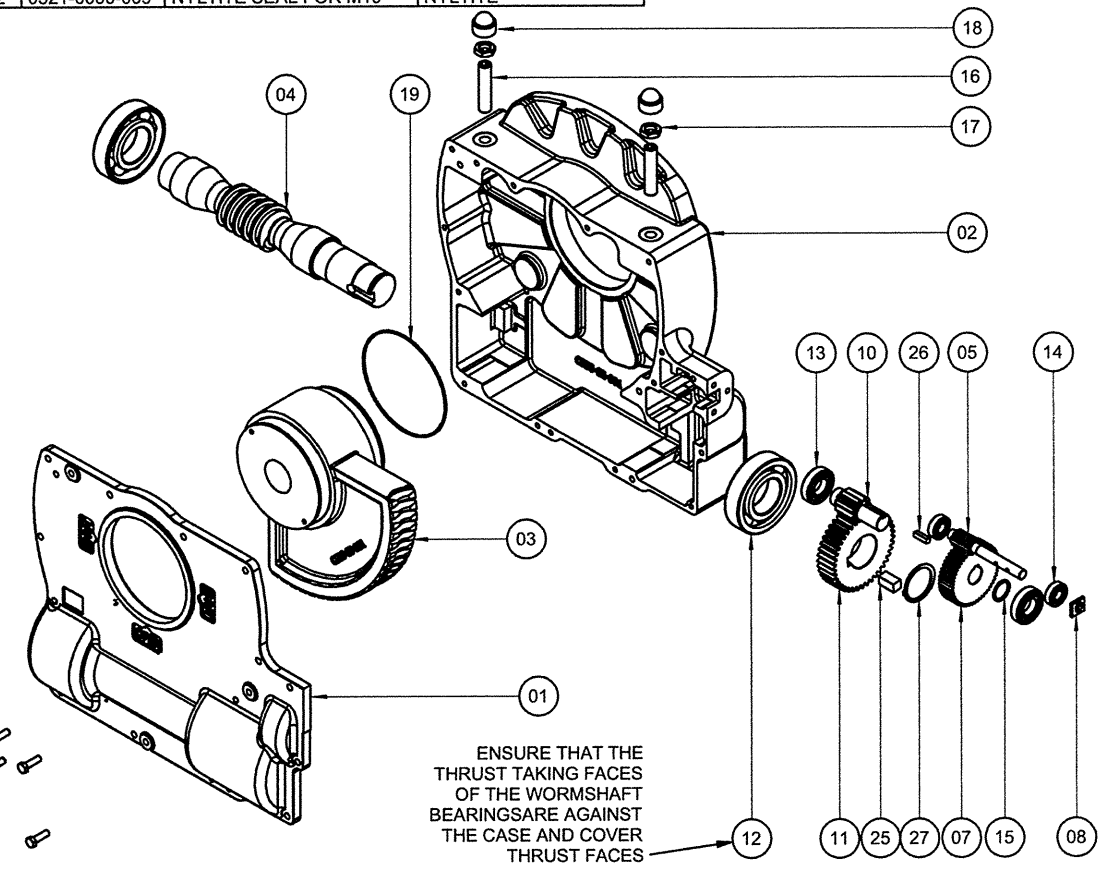
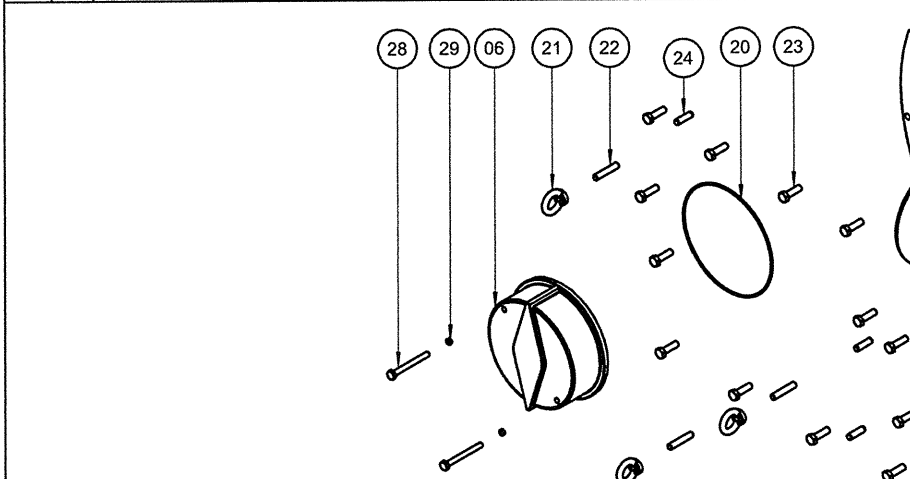


Parts List				
ITEM	QTY	PART NUMBER	DESCRIPTION	MATERIAL
01	1	C550-01-100	COVER	GR 250 CAST IRON
02	1	C550-02-100copy	GEARCASE	GR 250 CAST IRON
03	1	C550-03-100	QUADRANT	80-55-06 DUCTILE IRON
04	1	C550-04-100	WORMSHAFT	4140 STEEL 28-32 RC
05	1	C520-05-300	11 TOOTH INPUT PINION	4140 STEEL 28-32 RC
06	1	C550-06-100	INDICATOR CAP	GR 250 CAST IRON
07	1	C530-17-500	50 TOOTH SPUR FIRST WHEEL	4140 STEEL 28-32 RC
08	1	C503-02-101	INPUT OIL SEAL	HYTREL 5526
09	1		NAMEPLATE NOT SHOWN	THERMAL LABEL
10	1	C550-17-100	LAYSHAFT-11 TOOTH PINION	414- STEEL 28-32 RC
11	1	C550-17-101	41 TOOTH SPUR SECOND WHEEL	4140 STEEL 28-32 RC
12	2	0416-0201-015	WORMSHAFT BEARING 7315B	BALL BEARING
13	2	0416-0100-008	LAYSHAFT BEARING 6207	BALL BEARING
14	2	0416-0100-005	INPUT PINION BEARING 6204	BALL BEARING
15	1	C540-17-102	FIRST WHEEL SPACER	CARBON STEEL
16	2	0013-0505-275	STOPSCREW M24x110	HIGH TENSILE STEEL
17	2	0203-0105-013	M24 LOCKNUT PTFE COATED	CARBON STEEL
18	2	0806-0100-011	M24 PROTECTION CAP	HYTREL 5526
19	1	0500-0000-268	QUADRANT 'O' RING	BUNA-N 70
20	1	0500-0000-271	INDICATOR 'O' RING	BUNA-N 70
21	3	0240-0000-004	M12 EYENUT	CARBON STEEL
22	3	0054-0001-119	M12 x 60 LONG STUD	HIGH TENSILE STEEL
23	13	0003-0004-151	COVER SCREW M12 x 40	CARBON STEEL
24	3	0611-0100-173	COVER DOWEL 12 x 40 H&G	STEEL HARD SHINY
25	1	0601-0000-503	WORMSHAFT KEY	CARBON STEEL

Parts List				
ITEM	QTY	PART NUMBER	DESCRIPTION	MATERIAL
26	1	0601-0000-501	FIRST WHEEL KEY	CARBON STEEL
27	1	0701-0300-046	2nd WHEEL CIRCLIP	CARBON SPRING STEEL
28	2	0003-0004-315	INDICATOR SCREW M10x90	CARBON STEEL
29	2	0521-0000-009	NYLTITE SEAL FOR M10	NYLTITE

REV	ECN	DESCRIPTION	DATE	DWN	APP



ENSURE THAT THE THRUST TAKING FACES OF THE WORMSHAFT BEARINGS ARE AGAINST THE CASE AND COVER THRUST FACES

NOTE:
MEETS AWWA
300 FT-LBS
INPUT TORQUE
REQUIREMENTS

UNLESS OTHERWISE SPECIFIED ALL DIMENSIONS ARE IN INCHES TOLERANCES 1 PLACE (X.X) ± .030 2 PLACE (X.XX) ± .015 3 PLACE (X.XXX) ± .005 FRACTIONAL ± 1/64 ANGULAR ± 1' COMMON CENTER CIRCLES ARE ϕ WITHIN 0.010 T.I.R. REMOVE ALL BURRS BREAK ALL SHARP EDGES ✓ = 125 MICRONS DO NOT SCALE DRAWING	DRAWN BY: RW DRAWN DATE: 01/07/09 APPROVED BY: [Signature] APPROVED DATE: 2-9-09 PROPRIETARY INFORMATION DO NOT COPY OR REPRODUCE WITHOUT WRITTEN PERMISSION FILE: LAST MODIFIED:	PRATT [®] Henry Pratt Company 401 S. Highland Ave Aurora, IL 60506	TITLE: PRATT WORMGEAR MODEL WG50-300	SHEET: 1 REV: 0
	SIZE: B PART # N/A			
	SCALE: None DRAWING: GA-11882			

CAD