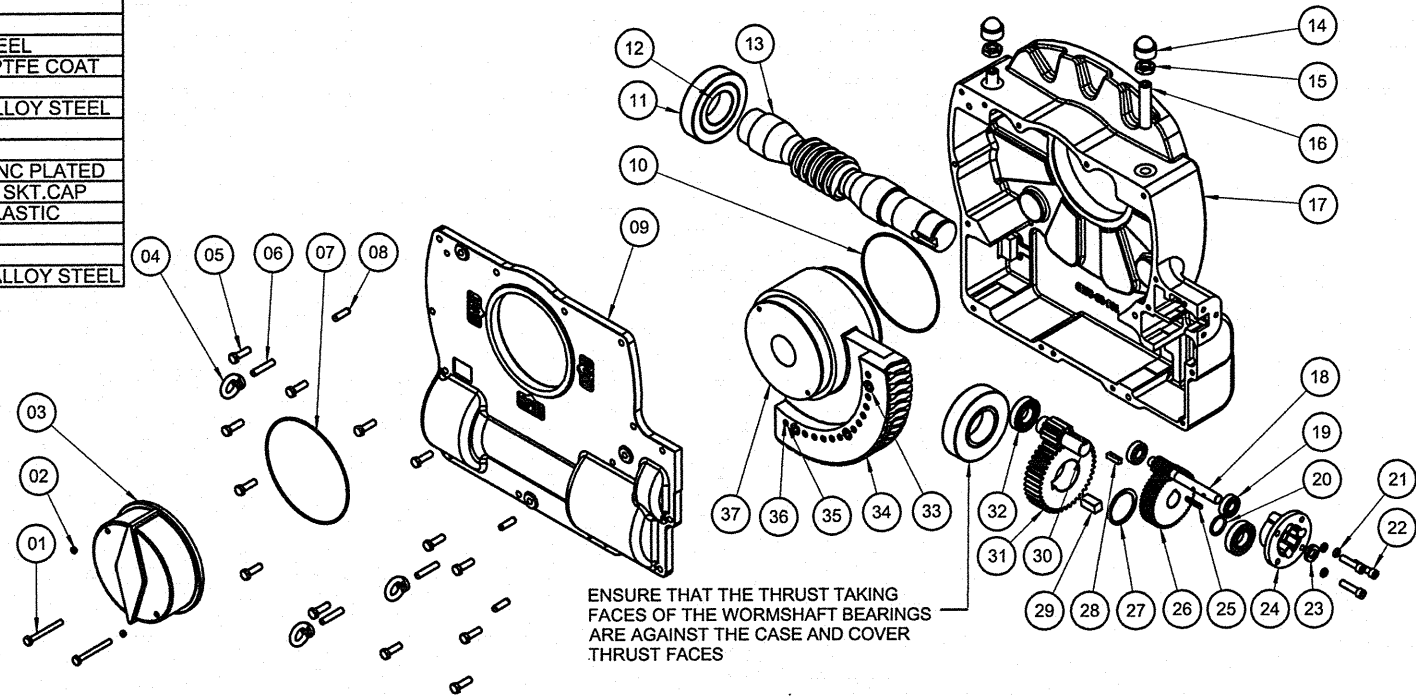


REV	ECN	DESCRIPTION	DATE	DWN	APP
-----	-----	-------------	------	-----	-----

Parts List				Parts List			
ITEM	QTY	PART NUMBER	DESCRIPTION	ITEM	QTY	PART NUMBER	DESCRIPTION
01	2	0003-0004-315	INDICATOR SCREW M10x90 HX.HD. ZINC PL.	27	1	0701-0300-046	2nd WHEEL CIRCLIP TYPE 1400-70M
02	2	0521-0000-009	NYLTITE SEAL FOR M10	28	1	0601-0000-501	FIRST WHEEL KEY 10 x 10 x 34 SQ. STEEL
03	1	C550-06-100	INDICATOR, CAST IRON	29	1	0601-0000-503	WORMSHAFT KEY 20 x 20 x 40 SQ. STEEL
04	3	2400000004	M12 EYE NUT, ZINC PL STEEL	30	1	C550-17-100	LAYSHAFT - 11 TOOTH PINION, ALLOY STEEL
05	13	0003-0004-151	COVER SCREW M12 x 40 HX.HD. ZINC PL.	31	1	C550-17-101	41 TOOTH SPUR 2ND WHEEL, ALLOY STEEL
06	3	0540001119	M12 x 60 LONG STUD, CARBDON STEEL	32	2	0416-0100-008	LAYSHAFT BEARING 6207
07	1	0500-0000-271	INDICATOR 'O' RING 9.1/4 x 9.1/2 x 1/8, BUNA	33	3	8020062520	5/8-11 UNC-2 Socket Head Cap Screw
08	3	0611-0100-173	COVER DOWEL 12 x 40 H&G	34	1	M550032PT	M50 2-PC QUAD - TEETH MACHINED, BRONZE
09	1	C550-01-100	COVER, CAST IRON	35	12	6043130002	5/16 X 2.1/4 Slotted Spring, STEEL
10	1	0500-0000-268	QUADRANT 'O' RING 8.1/2 x 8.3/4 x 1/8	36	12	6040500225	1/2 X 2.1/4 Slotted Spring, STEEL
11	2	M01007312B	M50 PILLOW BLOCK, CARBON STEEL	37	1	M550032PQ	M50 2-PC QUAD MACHINED, DUCTILE IRON
12	2	M01007312C	M50 PILLOW BLOCK BUSHING, BRONZE	38	1		NAMEPLATE NOT SHOWN, MYLAR
13	1	C550-04-100	WORMSHAFT, ALLOY STEEL				
14	2	0806-0100-011	M24 PROTECTION CAP, PLASTIC				
15	2	0203-0105-013	M24 LOCKNUT PTFE COATED STEEL				
16	2	0013-0505-275	STOPSCREW M24x110 SKT SET PTFE COAT				
17	1	C550 02 100	GEARCASE, CAST IRON				
18	1	C52005301	11 TOOTH INPUT PINION - F10, ALLOY STEEL				
19	2	0416-0100-005	INPUT PINION BEARING 6204				
20	1	C540-17-102	FIRST WHEEL SPACER, STEEL				
21	3	0301-0104-008	M12 S/C SPRING WASHER SQ. ZINC PLATED				
22	3	0013-0000-530	INPUT ADAPTOR SCREW M12x50 SKT.CAP				
23	1	0506-0000-045	INPUT OILSEAL 20 x 35 x 7 S/L, PLASTIC				
24	1	C540-23-100	F10 INPUT ADAPTOR, CAST IRON				
25	1	0601-0002-091	INPUT KEY 6 x 6 x 45 2R, STEEL				
26	1	C530-17-500	50 TOOTH SPUR FIRST WHEEL, ALLOY STEEL				



NOTE:  
MEETS AWWA  
300 FT-LBS  
INPUT TORQUE  
REQUIREMENTS

UNLESS OTHERWISE SPECIFIED ALL DIMENSIONS ARE IN INCHES <b>TOLERANCES</b> 1 PLACE (X.X) ± .030 2 PLACE (X.XX) ± .015 3 PLACE (X.XXX) ± .005 FRACTIONAL ± 1/64 ANGULAR ± 1' COMMON CENTER CIRCLES ARE WITHIN 0.010 T.I.R. REMOVE ALL BURRS BREAK ALL SHARP EDGES ✓ = 125 MICRONS DO NOT SCALE DRAWING	DRAWN BY: CEM DRAWN DATE: 2-28-12 APPROVED BY: AA APPROVED DATE: 2-28-12	Henry Pratt Company 401 S. Highland Ave Aurora, IL 60506	TITLE: <b>PRATT          WORMGEAR          MODEL WG55-300</b>	SHEET: 1 OF 1 REV: 0	
	PROPRIETARY INFORMATION DO NOT COPY OR REPRODUCE WITHOUT WRITTEN PERMISSION				SIZE: B SCALE: NONE DRAWING: GA-12227
		FILE LOCATION: H:\S\GA	PART # N/A		

C  
A  
D