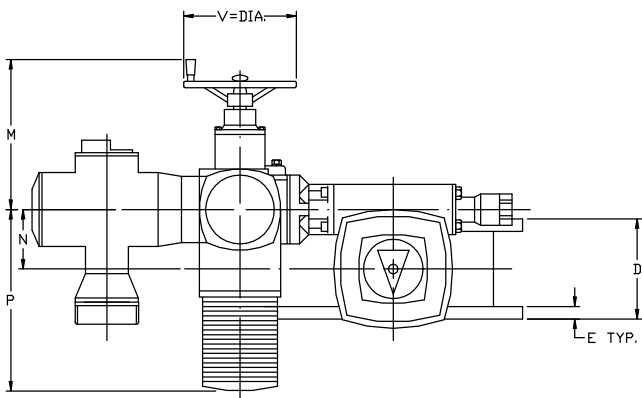


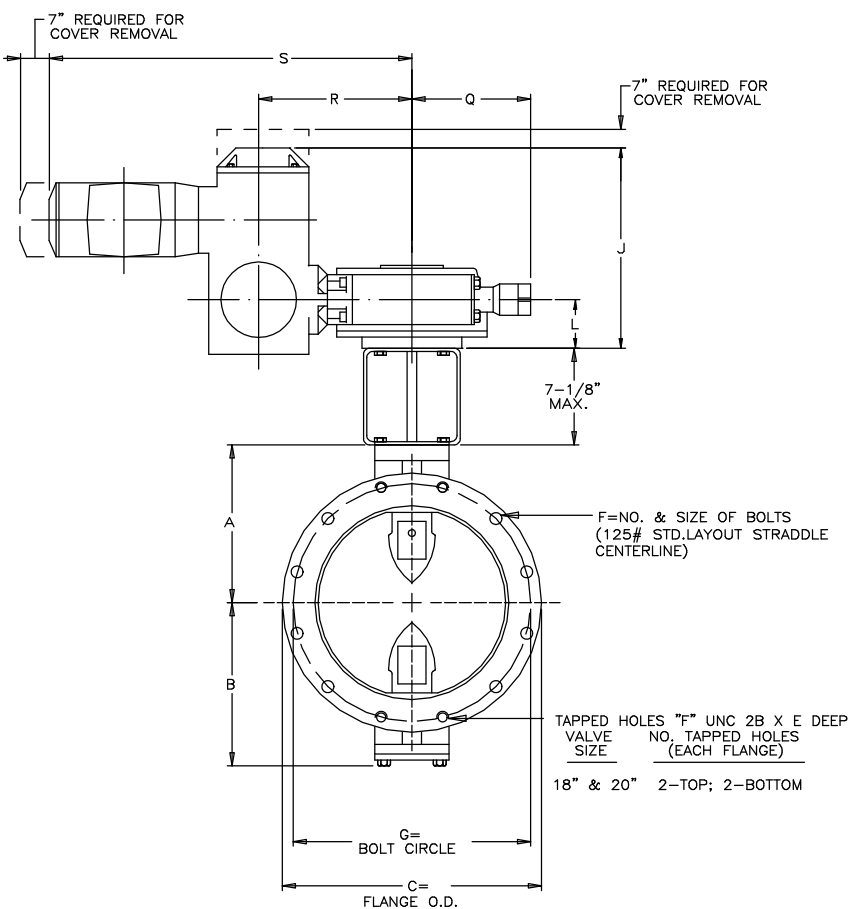
VALVE SIZE	A	B	C	D	E	F	G
18	14-3/8	15-3/8	25	8	1-9/16	16--1-1/8	22-3/4
20	16	17	27-1/2	8	1-11/16	20--1-1/8	25



ACTUATOR POSITION A-3

MODEL	J	L	M	N	P	Q	R	S	V
534,734	12-3/4	3	10-1/8	4	17-1/4	7-1/2	10-5/8	28-5/8	8

WIRING DIAGRAM	
MODEL	DRAWING NO.
534	GA-11664
734	GA-11653



NOTES:

- ALL DIMENSIONS SHOWN IN INCHES. "D" DIMENSION  $\pm 1/16$ ".
- DIMENSIONS AND DRILLING OF END FLANGES CONFORM TO THE AMERICAN CAST IRON FLANGE STANDARDS, CLASS 125 (B16.1).
- (RECOMMENDATIONS FOR MATING FLANGES) WHERE INSULATING BUSHINGS ARE USED, IT IS NECESSARY THAT BOLT HOLES BE DRILLED OVERSIZE BY AN AMOUNT EQUAL TO TWO TIMES THE INSULATING SLEEVE THICKNESS TO MAINTAIN THE SAME MINIMUM CLEARANCE FOR BOLTS.
- VALVES MANUFACTURED AND TESTED IN ACCORDANCE WITH AWWA SPECIFICATIONS C-504-LATEST, CLASS 150B.
- SUPPLIED WITH (2) 3/4" NPT CONDUIT ENTRIES.

REV.	DATE	BY	DESCRIPTION	APP.
1	3/15/07	ES	UPDATE WIRING DIAGRAMS	

**PRATT** HENRY PRATT COMPANY  
AURORA, ILL.

GENERAL ARRANGEMENT DRAWING  
2FI BUTTERFLY VALVE WITH  
POSITION II & III  
OPEN/CLOSE WITH CONTROLS

SCALE NONE DATE 6/9/06

DRAWN BY SR CHECKED BY JR

APPROVED GA=BORDER

DRWG. NO. GA-11579 REV 1 A/C