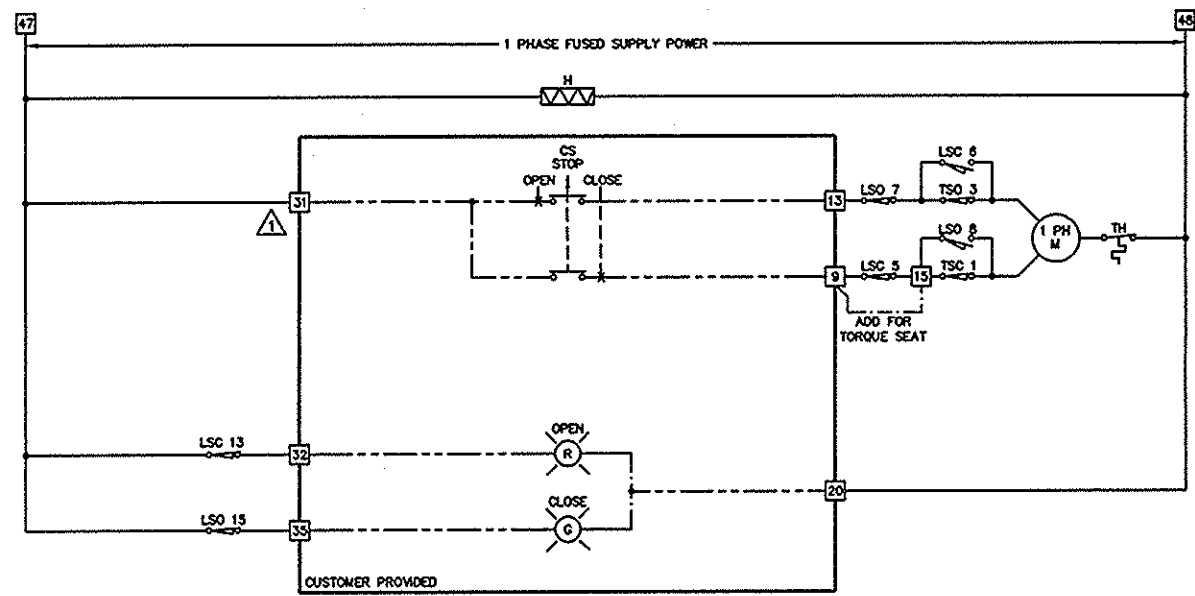


REV	ECN	DESCRIPTION	DATE	OWN	APP
1	N/A	CONNECTION NUMBER WAS 33	2/6/08	ES	

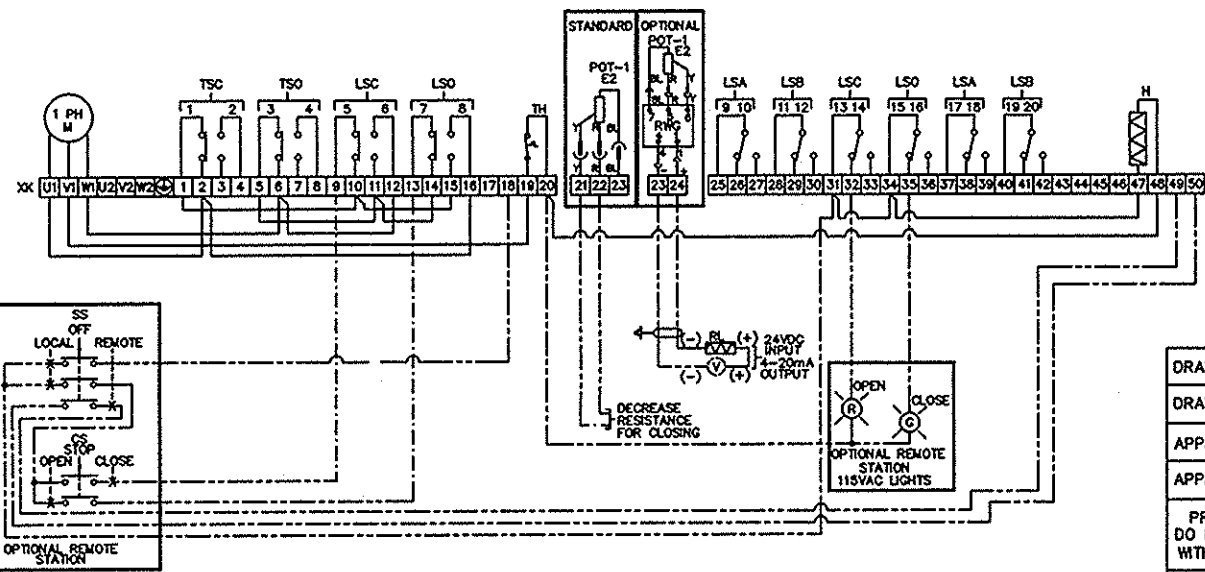


SYM.	DESCRIPTION
⊗	LIGHTS
⊕	GROUND
⊗	CUSTOMER TERMINATION

LEGEND	
CS	CONTROL SWITCH
H	HEATER
LSA (WOR)	LIMIT SWITCH INTERMEDIATE
LSB (WOL)	LIMIT SWITCH INTERMEDIATE
LSC (WSR)	LIMIT SWITCH CLOSE
LSO (WOL)	LIMIT SWITCH OPEN
M	MOTOR
POT	POTENTIOMETER
RWG	POSITION TRANSMITTER
TH	MOTOR THERMAL SW. (AUTO-RESET)
SS	SELECTOR SWITCH
TSC (OSR)	TORQUE SWITCH CLOSE
TSO (OOL)	TORQUE SWITCH OPEN

- NOTES:
- FIELD WIRING BY OTHERS
 - PAIRED SWITCHES WITHIN BRACKETS MUST HAVE SAME VOLTAGE
 - ACTUATOR DRAWING SHOWS THE UNIT IN THE MID-POSITION

CONTACT	VALVE POSITION		
	OPEN	INTERMEDIATE	CLOSE
TSC 1	█		
TSC 2	█		
TSO 3	█		
TSO 4	█		
LSC 5	█		
LSC 6	█		
LSO 7	█		
LSO 8	█		
LSA 9	█		
LSA 10	█		
LSB 11	█		
LSB 12	█		
LSC 13	█		
LSC 14	█		
LSO 15	█		
LSO 16	█		
LSA 17	█		
LSA 18	█		
LSB 19	█		
LSB 20	█		



REF: KMS91TP102/231/JE (HP-GA11650) -S

DRAWN BY: ES
DRAWN DATE: 2-23-07
APPROVED BY: PPS
APPROVED DATE: 3/1/07
PROPRIETARY INFORMATION DO NOT COPY OR REPRODUCE WITHOUT WRITTEN PERMISSION
FILE # GA1 LAST MODIFIED:

PRATT [®]	Henry Pratt Company 401 S. Highland Ave Aurora, IL 60506		C A D
	TITLE: WIRING FOR PRATT POSITRON II 504 & 524 OPEN-CLOSE BASIC		
SIZE: B	PART #	N/A	SHEET: 1 OF 1
SCALE: NONE	DRAWING:	GA-11650	REV: 1