

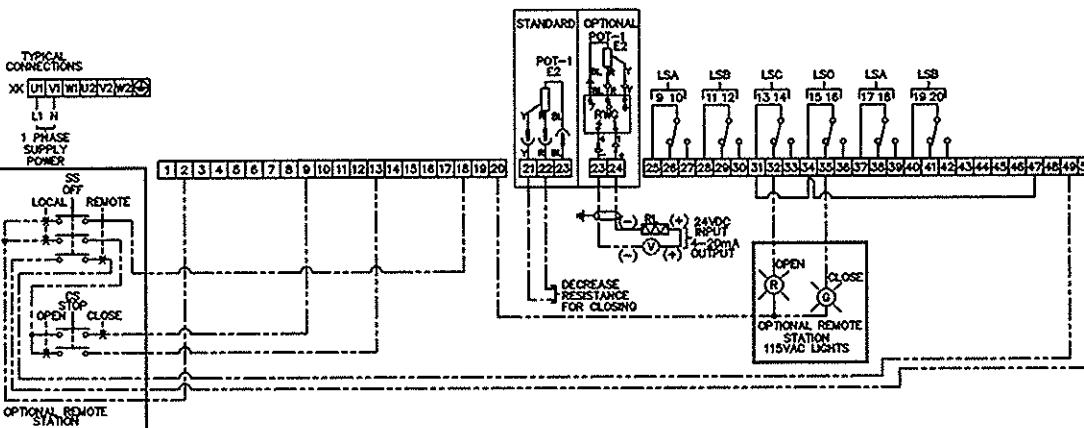
LEGEND	
CS	CONTROL SWITCH
H	HEATER
LSA (WOL)	LIMIT SWITCH INTERMEDIATE
LSB (WOL)	LIMIT SWITCH INTERMEDIATE
LSC (WOL)	LIMIT SWITCH CLOSE
LSD (WOL)	LIMIT SWITCH OPEN
M	MOTOR
POT	POTENTIOMETER
RTG	POSITION TRANSMITTER
SS	SELECTOR SWITCH
TH	THERMAL SWITCH (AUTO-RESET)
TSC (DOL)	TORQUE SWITCH CLOSE
TSD (DOL)	TORQUE SWITCH OPEN

SYM.	DESCRIPTION	SYM.	DESCRIPTION
⊗	LIGHTS	X	CUSTOMER TERMINATION
⊕	GROUND		

CONTACT	VALVE POSITION		
	OPEN	INTERMEDIATE	CLOSE
TSC 1	█		
TSC 2	█		
TSD 3		█	
TSD 4		█	
LSC 5			█
LSC 6			█
LSD 7			█
LSD 8			█
LSA 9			█
LSA 10			█
LSB 11			█
LSB 12			█
LSC 13			█
LSC 14			█
LSD 15			█
LSD 16			█
LSA 17			█
LSA 18			█
LSB 19			█
LSB 20			█

NOTES:

1. --- FIELD WIRING BY OTHERS
2. PAIRED SWITCHES WITHIN BRACKETS MUST HAVE SAME VOLTAGE
3. ACTUATOR DRAWING SHOWS THE UNIT IN THE MID-POSITION
4. A MINIMUM TIME DELAY OF 100 MILLISECONDS IS REQUIRED FOR MOTOR REVERSAL



REF: SSP 1A3-SR-JAKMS91TP102/231 (HP-GA11652) -S

DRAWN BY: ES	PRATT [®]	Henry Pratt Company 401 S. Highland Ave Aurora, IL 60508		C A D
DRAWN DATE: 2-26-07				
APPROVED BY: PPS	TITLE: WIRING FOR PRATT POSITRON II 504 & 524 OPEN CLOSE W/CONTROLS			
APPROVED DATE: 3-1-07				
PROPRIETARY INFORMATION DO NOT COPY OR REPRODUCE WITHOUT WRITTEN PERMISSION	SIZE: B	PART #	N/A	SHEET: 1 OF 1
FILE: J\GA1 LAST MODIFIED:	SCALE: NONE	DRAWING: GA-11652	REV: 0	