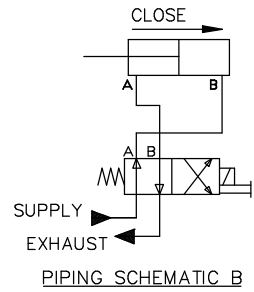
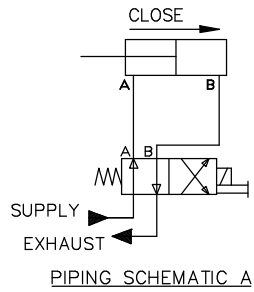


ALTERNATE FOR
MDT W/ MANUAL OVERRIDE

ALTERNATE FOR
MDT W/ MANUAL OVERRIDE

ELECTRICAL CHARACTERISTICS
 (UNLESS OTHERWISE NOTED)
 120 V AC
 20 WATTS



PIPING TO 4-WAY VALVE PORTS "A" & "B" CAN BE REVERSED AS SHOWN IN PIPING SCHEMATIC "B" (IF REQUIRED)

| | | | | | | | | |
|-----------|----|------|----------|--|-----------|----|------|----------|
| △ | | | | | △ | | | |
| △ | | | | | △ | | | |
| REV.-DATE | BY | APP. | REVISION | | REV.-DATE | BY | APP. | REVISION |